

ADVANCE INFORMATION

V-STAR™ – VTOL Swift Tactical Aerial Resource



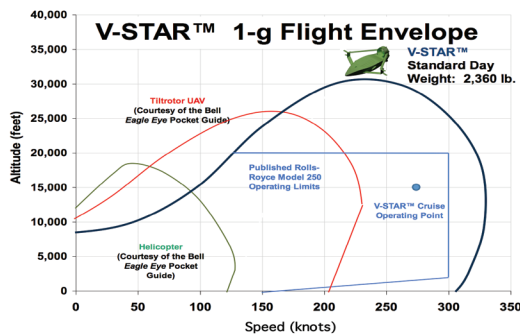
Tactical UAVs have tremendous potential to transform the outcome of the battlefield. However, none until V-STAR™ has solved the long-standing challenges of logistical support for troops with optional lethal payloads and capability of ISR and other missions.

V-STAR™ is a medium altitude, VTOL capable, autonomous UAV solution for land and naval force commanders that outperforms helicopters and tilt-rotor UAV systems. The design provides tremendous payload flexibility—from traditional ISR roles to lethal weapons to logistical supply deliveries for combat troops. V-STAR's™ unique patented lift fans, diamond box wing and Rolls Royce power plants create the core of this revolutionary UAV configuration.

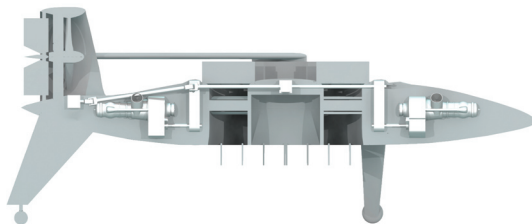
V-STAR™ CREATES NEW LOGISTICAL, INTELLIGENCE AND WEAPONS ASSETS.

Our VTOL-Swift Tactical Aerial Resource™ – or V-STAR™ – is the “HUMVEE of the air” and provides a breakthrough solution for frontline military logistics and related Multi-Role Endurance missions. With payload at the center-of-gravity, V-STAR™ provides real mission flexibility: it can carry ISTAR (intelligence/surveillance/target acquisition/reconnaissance) packages or weapons, then morph back into its primary role providing frontline combat logistics.

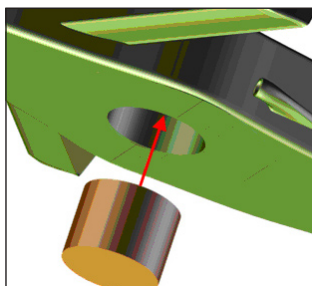
The modular payload approach allows for rapid change-out in the field – one minute providing troops with ammo, food, water and fuel – and the next minute providing tactical reconnaissance, communications and close combat support.



V-STAR™ Delivers Breakthrough Operational Performance



V-STAR™ Cut-away view



V-STAR™ payload integration

SPECIFICATIONS FOR V-STAR™ AND V-STAR™/ER

Model	V-STAR™	V-STAR™/ER
Cruise Speed	288 knots	145 knots
Top Speed	400 knots	400 knots
Range	Up to 2,650 nm	Up to 3,400 nm
Radius of Operation	1,325 nm	1,700
Payload Volume	11.2 ft ³	11.2 ft ³
Payload Weight	Up to 400 lbs	Up to 400 lbs
UCAV mission	YES	YES
Weapons Options	Hellfire, M230, M19, MK66	Hellfire, M230, M19, MK66
Noise	Low	Low
Rate of Climb	2,900 fpm	2,900 fpm
Cruise Altitude	16,000 ft	16,000 ft
Ceiling	32,500 ft	35,000 ft
Engine(s)	Twin RR Allison 250C20B	Twin RR Allison 250C20B
Power @ sea level	425-850 hp	425-850 hp
Time-between Overall	3,000 hrs	3,000 hrs
Empty weight	1580 lbs	1680 lbs
Fuel weight	380 – 755 lbs	380 – 755 lbs
TOGW	2,360	2,460
Length x Width	21.5 ft x 16.5 ft	21.5 ft x 24.5 ft
Endurance	Up to 15 hrs	Up to 24 hrs
Enclosed Blades	YES	YES
Operating \$/hr	~\$600 /hr	~\$500 /hr
Production Price Estimate	\$3.6 million	\$3.8 million

INTERNATIONAL TRAFFIC IN ARMS REGULATIONS (ITAR)

This document does not contain technical data within the definition contained within ITAR and the Export Administration Regulations (EAR), and as such is releasable by any means to any person whether in the U.S. or abroad.



**FRONTLINE
AEROSPACE, INC.**

RYAN S. WOOD, CEO

P 720-887-8171 C 303-941-9663 F 720-887-8239
RYAN.WOOD@FRONTLINEAEROSPACE.COM

14004 QUAIL RIDGE DRIVE
BROOMFIELD, COLORADO 80020

Notice: This document contains information on products that are in prototype and initial production phases of development. The specifications are subject to change without notice. Verify with Frontline Aerospace Inc. directly that you have the latest product information before installing in an experimental aircraft.